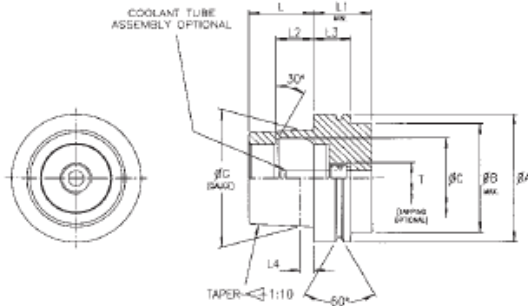


HSK DIN 69893 E

HSK DIN 69893 E

DIN 69893-1:1996-01- Form 'E' high speed applications



High speed applications for automatic tool change.
Option coolant fitting as form 'A'
Note: No rear drive slots, no slots or notches in the flange.

Toolholder supplied less coolant tube assembly which must be ordered separately.

HSK DIN 69893 Form 'E'										
Taper	A	B	C	G	L	L1	L2	L3	L4	T
HSK25E	25.0	20.0	16.4	19.0	13.0	20.0	7.21	10.0	2.5	-
HSK32E	32.0	26.0	21.0	24.0	16.0	35.0	8.92	20.0	3.2	M10x1.0
HSK40E	40.0	34.0	25.5	30.0	20.0	35.0	11.42	20.0	4.0	M12x1.0
HSK50E	50.0	42.0	32.0	38.0	25.0	42.0	14.13	26.0	5.0	M16x1.0
HSK63E	63.0	53.0	40.0	48.0	32.0	42.0	18.13	26.0	6.3	M18x1.0